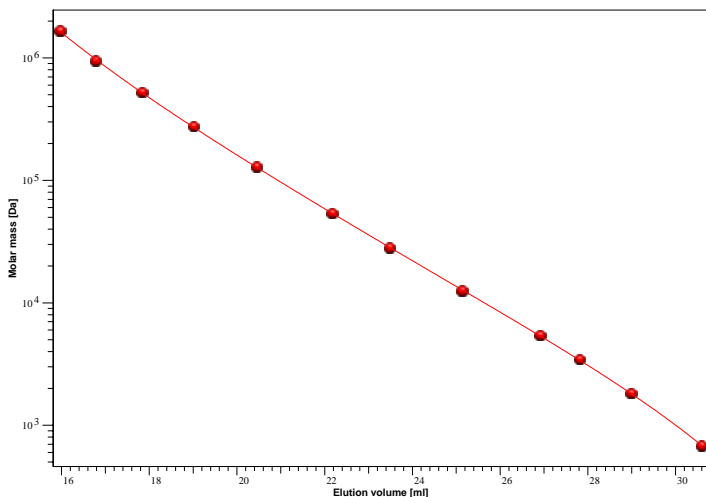


# Certificate of Analysis

Kit Poly(styrene) high  
 Part No: PSS-pskith  
 Lot No: pskith-03

## GPC/SEC Calibration - Curve



### Calibration - Conditions

Solvent THF  
 Flow rate 1,00 ml/min  
 Precolumn [8 x 50 mm] none  
 Columns [8 x 300 mm] PSS SDV 5µm 10e3Å / 10e5Å / 10e6Å  
 Inject volume 20 µl  
 Internal standard Toluene at 34,54 ml  
 Data Acquisition Software PSS WinGPC  
 Calibration by S. Fugmann

**Fit quality**  
 Fit-type PSS Poly 5  
 R 0,999982

Elution volume [ml]	Mp [Da]	Polymer Lot No:	Deviation [%]
15,9672	1670000	ps8097	- 1,24
16,7676	956000	ps5087n	3,02
17,8313	526000	ps10128	- 0,55
19,0088	277000	ps31059	- 1,62
20,4460	130000	ps5124	- 1,22
22,1649	54000	ps7063	0,35
23,4807	28000	ps21116	1,63
25,1260	12600	ps5019	1,90
26,9118	5440	ps1126	- 1,27
27,8053	3470	ps6126	- 1,46
28,9881	1820	ps200504	- 0,21
30,5896	682	ps23096n	0,82

**Note:**

Mp = Molar Mass at the Peak Maximum

Manufacture and control according to PSS method of analysis



Dr. T. Hofe  
 production director